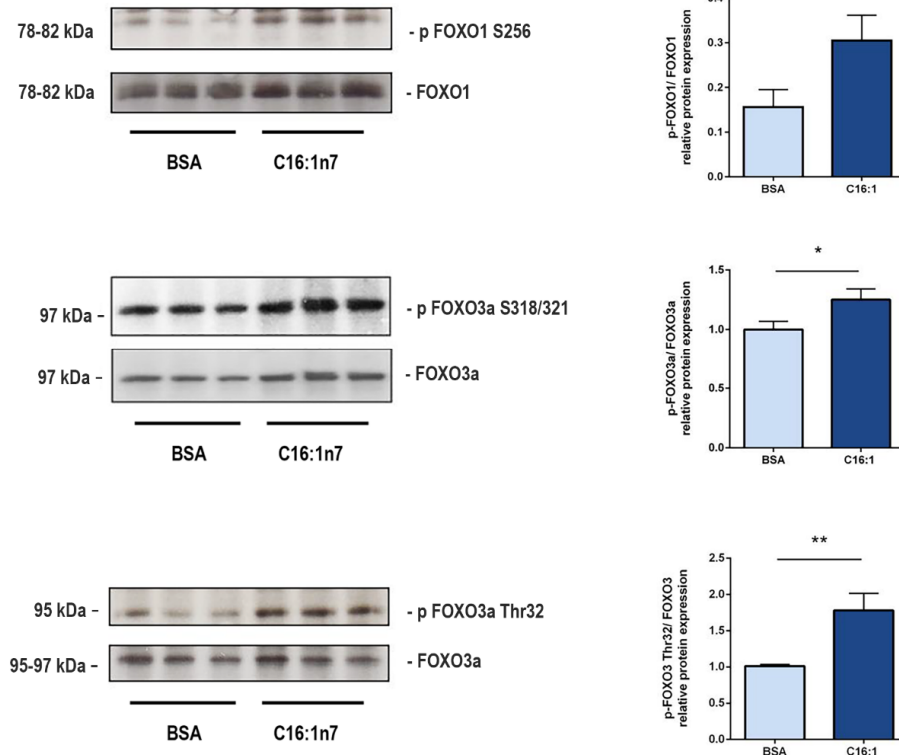


A



B

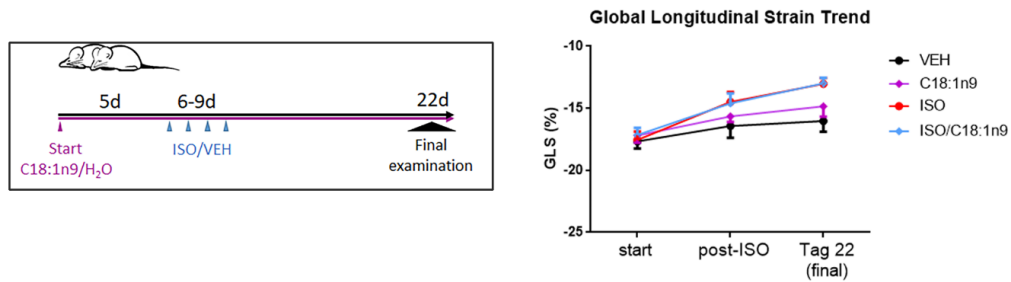


Figure S1. (A) Western Blot analysis of FOXO1 and FOXO3 phosphorylation in HL-1 cardiomyocytes, stimulated with 471 μ M C16:1n7 for 30 min. Data are presented as mean \pm SEM. $N = 3$, $n = 3$, * $p < 0.05$, ** $p < 0.01$, as analyzed using unpaired ttest. **(B)** C18:1n9 application to mice seems to be less protective against ISO-induced cardiac damage. **(B)** Experimental design. The 129sv wt mice were daily orally supplemented with C18:1n9 or Vehicle, as control. After 5 days (pretreatment), the mice received additionally s. c. ISO/Veh application for 4 consecutive days. At the baseline, day after last ISO application and during the final examination (day 22) the animals underwent echocardiographic analysis. GLS-trend is shown, $n = 7-12$, control groups as in Figure 3. GLS: global longitudinal peak strain, FOXO: Forkhead-Box-Protein O.